

# 2026 Stroke Guideline updates

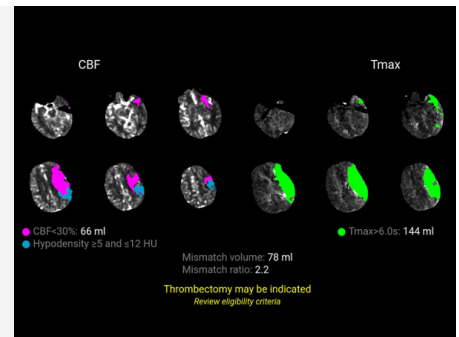
## Key tech-related implications

Align to the latest AHA stroke guidelines with the gold standard in stroke care

### Late-window thrombolysis

#### Late window IVT eligibility requires perfusion imaging

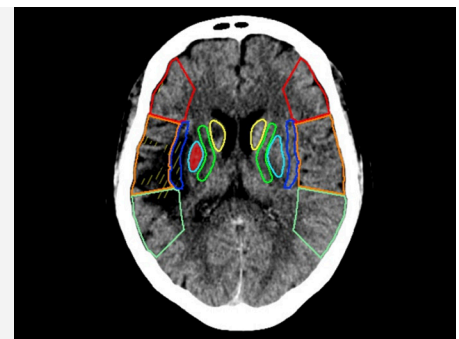
Rapid CTP supports treatment selection by identifying salvageable ischemic penumbra in patients considered for IVT, including 4.5-9 hour, wake-up stroke, and selected LVO patients up to 24 hours who are not EVT candidates.



### ASPECTS EVT selection

#### ASPECTS-led EVT selection where advanced imaging is not available

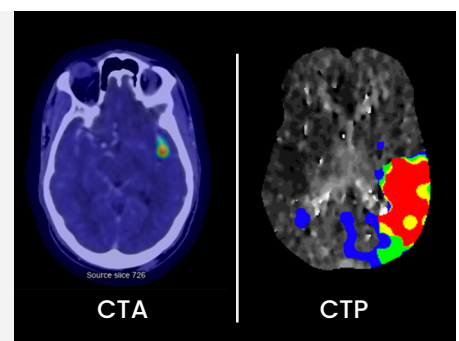
Rapid ASPECTS elevates scoring consistency for ICA-M1 LVO and differentiates old infarct with hash mark visuals.



### MeVO ID + treatment

#### EVT vs IVT treatment decisions recommended by occlusion location

Identify suspected MeVOs with complete occlusion detection on CTA, and leverage the gold standard perfusion imaging with 95% sensitivity for MeVOs.<sup>1</sup>



### Basilar occlusion EVT

#### Strong support of EVT in patients with basilar artery occlusion within 24 hrs

Activate stroke teams faster for suspected basilar occlusion patients with Rapid LMVO.

